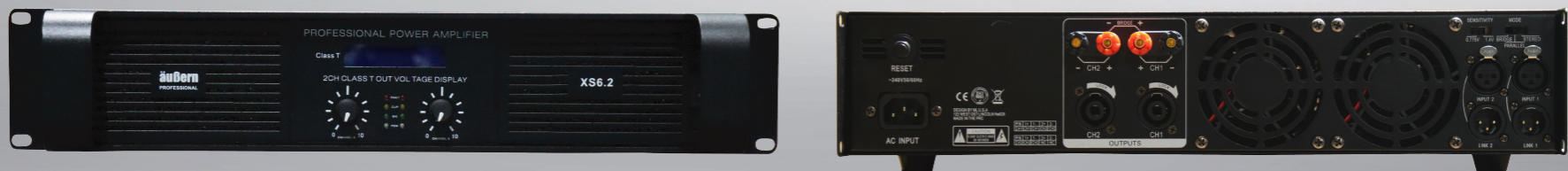


# XS-SERIES PROFESSIONAL AMPLIFIER



## FEATURES

- ✓ Professional Stereo 2 Channel Power Amplifier, All Models in the series are powerful, rugged and reliable. They identical except for Output Power. Have 3 Mode/Separate Speaker Output : 8Ω, 4Ω & Bridge, (can be Stereo, Parallel, Mono & Bridge Mode).
- ✓ This Series Built-in RCA & XLR for Connector Input, with selectable input Sensitivity : 0,775V and 1,4V and Speakon and Speaker Terminal/Binding Post for Output Connector.
- ✓ Have 2 Independent Gain Control Knobs, 1 Power Switch & 1 Power Indicator, and Protection against Short Circuit, No Load, Switch Noise, Radio Frequency interfere protection circuit.

## DETAIL SPECIFICATION

Model	XS.6.2	XS.8.2	XS.10.2	XS.13.2
8 Ω Stereo	600W*2	850W*2	1000W*2	1200W*2
4 Ω Stereo	900W*2	1200W*2	1400W*2	1800W*2
8 Ω Bridge Mono	1800W	2400W	2800W	3600W
Frequency Response(1W)	20Hz-20KHz, +/- 1dB			
THD	< 0.5%, 20Hz-20KHz			
IMD	0.35% (60Hz- 7KHz, output to-30dB)			
Switching Rate	>10V/US			
Voltage Gain	33dB	34dB	35dB	36dB
Damping Factor	>200 (8 0hms,20Hz- 400Hz)			
SNR	100dB (20Hz- 20KHz, Rated output power as a reference)			
Crosstalk	73dB /-57			
Input Sensitivity	0.775V / 1.4V (Rated power 8 Ohm)			
Input Impedance(rated)	20K ohms / 10K ohms (Balanced / Unbalanced)			
Input Connector	One balance XLR, One unbalanced RCA			
Output Connector	4-POLE Speakon and a pair of terminals			
Control Features	Power switch and Gain control			
Rear panel Features	Stereo, Parallel, Bridge mode select,Input sensitivity options			
Front panle indicator	Power, Signal, Clipping, Protection LED lamp			
Power Supply	Plug:10A 250V ~230V, 50Hz- 60Hz			
Protection	Short circuit, Overload, Overheating, Switching surge, Wireless interference			
Dimension (W*H*D)	482mm*89mm*330mm		482mm*89mm*380mm	
Weight	16Kg	20Kg	22kg	25kg